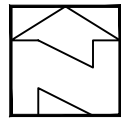
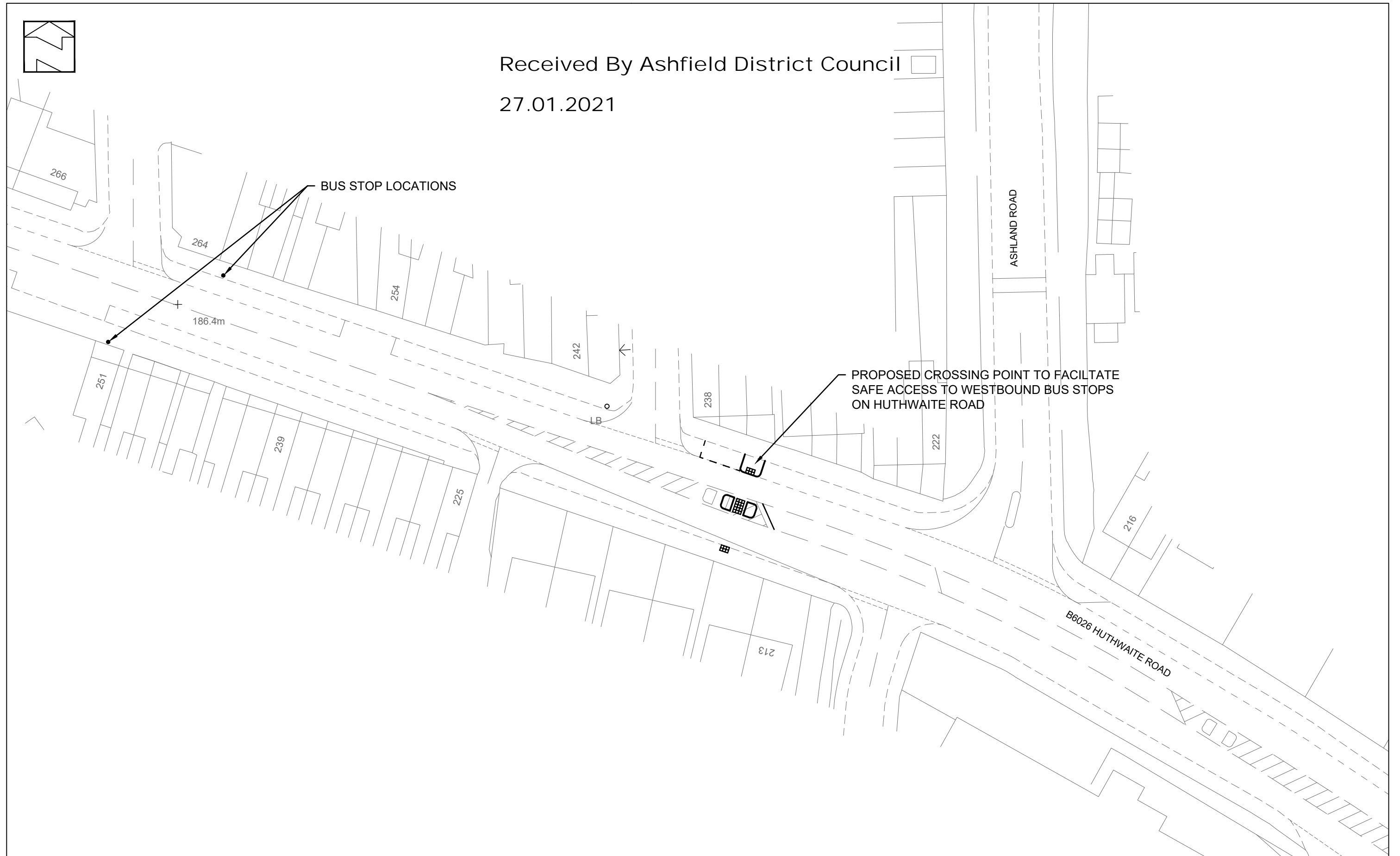



Received By Ashfield District Council
27.01.2021



BUS STOP LOCATIONS

PROPOSED CROSSING POINT TO FACILITATE
SAFE ACCESS TO WESTBOUND BUS STOPS
ON HUTHWAITE ROAD



			Project: Ashland Road West, Sutton in Ashfield	Client: Bellway Homes	 Drg Size: A3 Scale: 1:500 Date: 25/01/2021	
			Title: Pedestrian Improvements B6026 Huthwaite Road			Drg No: ADC1032-DR-002 Rev: P1
Rev	Description	Date				